

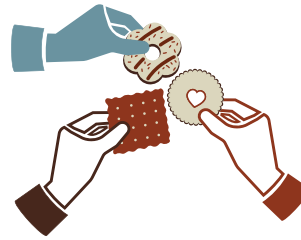
IMPORTANCE OF ALLIGNMENT

While everything collaborators do requires trust, The Patterson Foundation has learned that the alignment of five characteristics — leadership, willingness, readiness, capacity, and culture — is critical to success.



Leadership

Value of collaboration is understood and used to drive impact



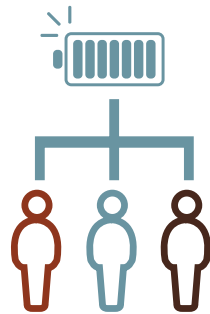
Willingness

Enthusiasm about working together and with others accelerates change



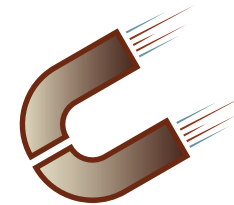
Readiness

Available to embrace the journey



Capacity

Ability to bring assets to the work and implement strategic recommendations



Culture

Shared belief that strengthening the future starts with passionaries and possibilarians