



# WHAT WE HEARD

Themes from your community conversations.

## CONNECTING

**Intentional connecting, human to human.**



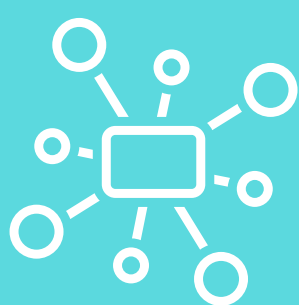
Many people shared that in uncertain times, slowing down and connecting intentionally allowed them to build trust and deepen relationships in ways they would not have taken the time for previously.

## KEEPING THE LOCAL ECONOMY THRIVING



Recent events have revealed the fragility of our local economy, and it is impacting business and nonprofits alike. Some organizations are able to adapt and thrive with new tele-services or order online, while the heavy influence of tourism and service jobs have created wide-reaching difficulties for those who live and work in our community.

## EQUITY OF ACCESS



Current events have brought to the forefront inequities in our communities and how they adversely affect our children, working families and older adults. More equitable access to services will result in stronger people, who can power a stronger economy and ultimately create a stronger community.

## HOW ARE PEOPLE FEELING?



Despite the very real difficulty of how uncertain the future is, the participants in community conversations were optimistic. The fear that can come from not being sure of what steps to take when, is balanced by the positive impact of being more connected. A unique outcome of the COVID-19 pandemic is that it gives all humans a shared experience.